

Cheer 1

Play 2x - Sing 2x

Last time

Musical score for "Cheer 1" featuring various instruments and vocal parts. The score is divided into two sections: "Play 2x - Sing 2x" and "Last time".

Instruments and Parts:

- Flute
- Oboe
- Clarinet
- Bass Clarinet
- Alto Saxophone
- Tenor Saxophone
- Baritone Saxophone
- Bassoon
- Trumpet
- Horn
- Trombone
- Euphonium
- Tuba

Lyrics:

Migh - ty Tro-jans!
Go Migh - ty Tro-jans!
Go Migh - ty Tro-jans!
Go Migh - ty Tro-jans!
Go Migh - ty Tro-jans!
Go Migh - ty Tro-jans!
Go Migh - ty Tro-jans!
Go Migh - ty Tro-jans!
Go Migh - ty Tro-jans!
Go Migh - ty Tro-jans!
Go Migh - ty Tro-jans!
Go Migh - ty Tro-jans!

Performance Notes:

- Flute, Oboe, Clarinet, Bass Clarinet, Alto Saxophone, Tenor Saxophone, Trumpet, and Horn play a melodic line consisting of quarter notes: G4, A4, B4, C5.
- Baritone Saxophone, Bassoon, Trombone, and Euphonium play a rhythmic accompaniment of eighth notes: G4, A4, B4, C5, G4, A4, B4, C5.
- Tuba plays a rhythmic accompaniment of eighth notes: G4, A4, B4, C5, G4, A4, B4, C5.
- Triplet markings (3) are present under the eighth notes in the Baritone Saxophone, Bassoon, Trombone, Euphonium, and Tuba parts.
- Repeat signs with first and second endings are used for the first section.

19 PLAY

Fl. 1, 2
J A N S GO! *ff*

Ob.
J A N S GO!

Cl. 1
J A N S GO!

B. Cl.
J A N S GO!

A. Sax. 1, 2
J A N S GO!

T. Sax.
J A N S GO!

B. Sax.
J A N S GO!

Bsn.
J A N S GO!

Tpt. 1, 2
J A N S GO!

Hn. 1, 2
J A N S GO!

Tbn. 1, 2
J A N S GO!

B. Tbn.
J A N S GO!

Tba.
J A N S GO!

Flute

Cheer 1

Play 2x - Sing 2x

ff Go Migh - ty Tro - jans!

5 Last time

Cheer 2

ff Go Migh-ty Tro - jans!

T R O J A

N S GO! *ff*

Oboe

Cheer 1

Play 2x - Sing 2x

Musical notation for the first line of 'Cheer 1'. It consists of a single staff in G major (one flat) with a treble clef. The melody starts with a half note G4, followed by quarter notes A4 and B4, then a quarter note C5 with a quarter rest, and finally a quarter note D5 with a quarter rest. The piece ends with a double bar line and repeat dots. The lyrics 'Go Migh - ty Tro-jans!' are written below the staff.

5

Last time

Musical notation for the second line of 'Cheer 1', starting at measure 5. It follows the same melody as the first line. The piece ends with a double bar line, a repeat sign, and a '2' indicating a second ending.

Cheer 2

10

PLAY

CHEER!

PLAY

Musical notation for the first line of 'Cheer 2', starting at measure 10. It consists of a single staff in G major with a treble clef. The melody starts with a dotted quarter note G4, followed by eighth notes A4 and B4, then a quarter note C5 with a quarter rest. This is followed by a repeat sign, the same melody, another repeat sign, and a final 'PLAY' instruction. The lyrics 'Go Migh-ty Tro- jans!' are written below the staff.

16

YELL!

Musical notation for the second line of 'Cheer 2', starting at measure 16. It consists of a single staff in G major with a treble clef. The melody consists of five quarter notes, each marked with an 'x' above it, representing a yell. The notes are G4, A4, B4, C5, and D5. The lyrics 'T R O J A' are written below the staff.

21

PLAY

Musical notation for the third line of 'Cheer 2', starting at measure 21. It consists of a single staff in G major with a treble clef. The melody consists of three quarter notes marked with 'x' (G4, A4, B4), followed by a quarter note C5 marked with a circled 'x', and then the melody from the first line of 'Cheer 2'. The lyrics 'N S GO!' are written below the staff.

Clarinet

Cheer 1

Play 2x - Sing 2x

Go Migh - ty Tro-jans!

5 Last time

2

Cheer 2

10 PLAY

CHEER!

PLAY

Go Migh-ty Tro- jans!

16 YELL!

T R O J A

21 PLAY

N S GO!

Bass Clarinet

Cheer 1

Play 2x - Sing 2x



Go Migh - ty Tro - jans!

5 Last time



Cheer 2

10 PLAY

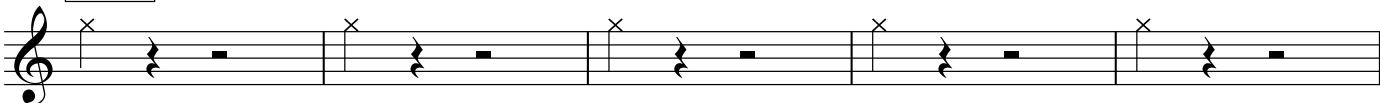
CHEER!

PLAY



Go Migh-ty Tro - jans!

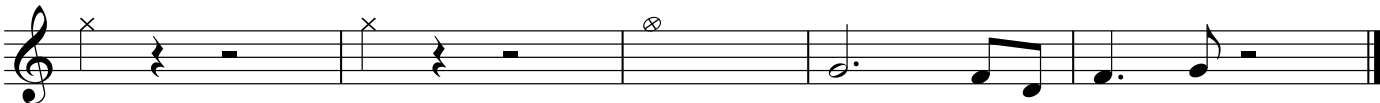
16 YELL!



T R O J A

21

PLAY



N S GO!

Alto Saxophone

Cheer 1

Play 2x - Sing 2x

Go Migh - ty Tro - jans!

5 Last time

2

Cheer 2

10 PLAY CHEER! PLAY

Go Migh-ty Tro - jans!

16 YELL!

T R O J A

21 PLAY

N S GO!

Tenor Saxophone

Cheer 1

Play 2x - Sing 2x



Go Migh - ty Tro - jans!

5 Last time



Cheer 2

10 PLAY

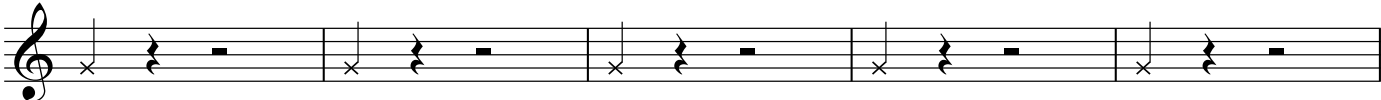
CHEER!

PLAY



Go Migh-ty Tro - jans!

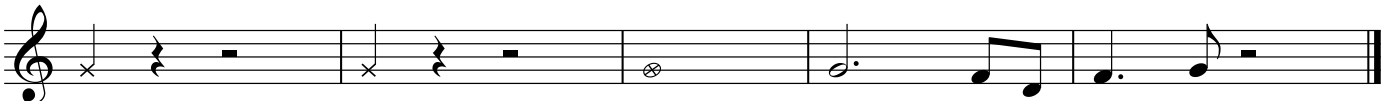
16 YELL!



T R O J A

21

PLAY



N S GO!

Baritone Saxophone

Cheer 1

Play 2x - Sing 2x

Musical notation for the first line of 'Cheer 1'. It consists of a single staff in G major (one sharp). The melody starts with a whole note G, followed by a half note A, and then a series of eighth notes: B, C, D, E, F, G, A, B, C, D, E, F, G. The last four notes (B, C, D, E) are grouped as triplets. The lyrics 'Go Migh - ty Trojans!' are written below the notes.

5 Last time

Musical notation for the second line of 'Cheer 1', starting at measure 5. It follows the same melody as the first line, ending with a quarter rest. The lyrics 'Go Migh - ty Trojans!' are written below the notes.

Cheer 2

10

PLAY

CHEER!

PLAY

Musical notation for the first line of 'Cheer 2'. It consists of a single staff in G major. The melody starts with a dotted quarter note G, followed by an eighth note A, a quarter rest, a dotted quarter note B, and an eighth note C. This pattern repeats. The lyrics 'Go Migh-ty Tro - jans!' are written below the notes.

16

YELL!

Musical notation for the second line of 'Cheer 2'. It consists of a single staff in G major. The melody is a series of quarter notes: G, A, B, C, D, E, F, G, A. The notes G, A, B, C, and D are marked with an 'x' above them, indicating a yell. The lyrics 'T R O J A' are written below the notes.

21

PLAY

Musical notation for the third line of 'Cheer 2'. It consists of a single staff in G major. The melody starts with a quarter rest, followed by a dotted quarter note G, an eighth note A, a quarter rest, a dotted quarter note B, and an eighth note C. The notes G, A, and B are marked with an 'x' above them. The lyrics 'N S GO!' are written below the notes.

Trombone

Cheer 1

Play 2x - Sing 2x

Musical staff for the first line of 'Cheer 1'. It begins with a bass clef and a key signature of one flat (B-flat). The melody starts with a whole note G, followed by a half note G, and then a series of eighth notes: G, A, B, A, G, F, E, D, C, B, A, G. The last four notes (C, B, A, G) are grouped with a '3' and a bracket, indicating a triplet. The staff ends with a double bar line and repeat dots.

Go Migh - ty Trojans!

5 Last time

Musical staff for the second line of 'Cheer 1'. It continues the melody from the first line, starting with a whole note G, followed by a half note G, and then a series of eighth notes: G, A, B, A, G, F, E, D, C, B, A, G. The last four notes (C, B, A, G) are grouped with a '3' and a bracket, indicating a triplet. The staff ends with a double bar line.

Cheer 2

10 PLAY

CHEER!

PLAY

Musical staff for the first line of 'Cheer 2'. It begins with a bass clef and a key signature of one flat. The melody consists of quarter notes: G, A, B, A, G, followed by a double bar line, then a repeat sign, followed by quarter notes: G, A, B, A, G, followed by another double bar line and repeat sign, and finally quarter notes: G, A, B, A, G. The staff ends with a double bar line.

Go Migh-ty Tro- jans!

16 YELL!

Musical staff for the second line of 'Cheer 2'. It consists of five measures, each starting with a quarter rest followed by a quarter note G. Above each measure is an 'x' symbol, indicating a 'yell' or 'hit' point. The notes are: G, G, G, G, G. The staff ends with a double bar line.

T R O J A

21

PLAY

Musical staff for the third line of 'Cheer 2'. It consists of four measures. The first two measures start with a quarter rest followed by a quarter note G. The third measure starts with a quarter rest followed by a quarter note G with a circled 'x' above it. The fourth measure starts with a quarter rest followed by a quarter note G. The staff ends with a double bar line.

N S GO!

Tuba

Cheer 1

Play 2x - Sing 2x

Musical notation for the first line of 'Cheer 1'. It features a bass clef, a key signature of one flat (B-flat), and a 4/4 time signature. The melody consists of a half note G, followed by quarter notes G and A, then a triplet of quarter notes G, A, and B, and finally a triplet of quarter notes C, D, and E. The lyrics 'Go Migh - ty Trojans!' are written below the notes.

5 Last time

Musical notation for the second line of 'Cheer 1', starting at measure 5. It continues the melody from the first line with a triplet of quarter notes G, A, and B, followed by a triplet of quarter notes C, D, and E, and ends with a quarter rest. The lyrics 'Go Migh - ty Trojans!' are written below the notes.

Cheer 2

10

PLAY

CHEER!

PLAY

Musical notation for the first line of 'Cheer 2'. It features a bass clef, a key signature of one flat (B-flat), and a 4/4 time signature. The melody consists of a dotted quarter note G, followed by eighth notes G and A, then a dotted quarter note B, and finally eighth notes C and D. The lyrics 'Go Migh-ty Tro- jans!' are written below the notes.

16

YELL!

Musical notation for the second line of 'Cheer 2'. It features a bass clef, a key signature of one flat (B-flat), and a 4/4 time signature. The melody consists of eighth notes G, A, B, C, D, E, F, G, followed by eighth notes A, B, C, D, E, F, G, A.

21

PLAY

Musical notation for the third line of 'Cheer 2'. It features a bass clef, a key signature of one flat (B-flat), and a 4/4 time signature. The melody consists of eighth notes G, A, B, C, D, E, F, G, followed by eighth notes A, B, C, D, E, F, G, A.